



CE RoHS

Electrical Information		
Model No.	CPS-FL65-005	CPS-FL65-010
Power Consumption (W)	5	10
Battery	LiFePO4	
Battery Capacity (WH)	23.04	51.84
Solar Panel	Mono-crystalline	
Solar Panel Wattage (W)	7.5	15
Charging Time (Hours)	>5.5	>6
Operating Time	Intelligent mode: 1days	
Solar Charge Controller	PWM	

* The tolerance for power is $\pm 5\%$.

Optic Information		
LED Type	LED 2835	
Luminous Flux (lm)	up to 850	up to 1700
Efficacy (lm/W)	up to 170	
Correlated Color Temperature	5000K (3000K, 4000K optional)	
Color Rendering Index	Ra70 (Ra80 optional)	
Beam Angle	F00C66 (100°), F00165+F00C66	
UGR level	N/A	

* The tolerance for luminous flux is $\pm 10\%$.

Description

CPS-FL65 is a solar flood light with slim design. Movable and rotatable mounting ways are available for multiple applications. Plus, specialized asymmetric optics excels in illuminating billboards.

Key Features

- System efficiency up to 170lm/W.
- Higher conversion mono-crystalline photovoltaic solar panel.
- Asymmetric optics excels in illuminating billboards.

Dimensions and Mount

Product Dimension (mm)	597×127×53	1063×127×53
Luminaire Net Weight (kg)	2.0	3.4
Export Carton Size (mm)	665x170x90	1130x170x90
Gross Weight (kg)	2.5	4.1
Mounting Option	Rotatable mounting bracket	
	Movable mounting bracket	
Material	Aluminum alloy	
	Polycarbonate optical lens	
Finish	Powder coating	
Fixture Color	Silver(RAL9006)	
EPA(m ²)	0.08	0.13
IK Rating	N/A	
IP Rating	IP66	
Category of corrosion	C3 (ISO 9223:2012)	

* The tolerance for weight is $\pm 6\%$.

Lifespan and Warranty

Operating Temperature (°C)	0 to +50	
Lifespan of LED @Ta=25°C (hours)	L90-80000	
	L80-170000	
	L70-270000	
Warranty (years)	Battery 3-year. Other accessories 5-year warranty	

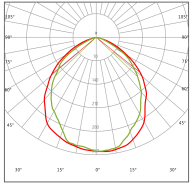
Applications

- Outdoor corridors
- Walls
- Pedestrian overpass
- Parks
- Bus stops
- Guardrail
- Billboards

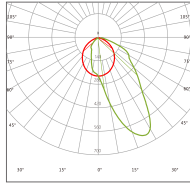
New Features

* Please consult us for details.

Photometry



F00C66 (100°)



F00165+F00C66

Intelligent Control Mode

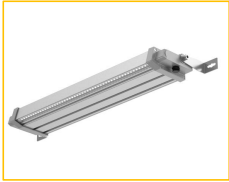
Default working mode:

Time	Dusk							Dawn				
	1H	2H	3H	4H	5H	6H	7H	8H	9H	10H	11H	- - -
Brightness	100%	70%			50%			20%				

100% brightness at first hour;
 70% from 2nd to 4th hour;
 50% from 5th to 6th hour;
 20% from 7th hour to Dawn or till the light turns off.

Note: the working hours depend on the local weather and Sunshine.

Mounting Options



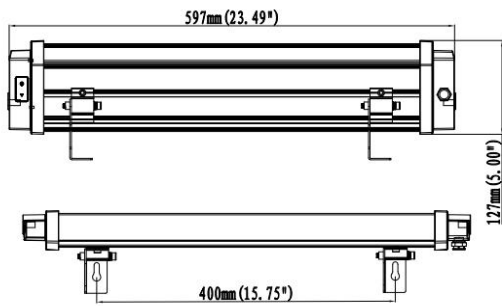
Rotatable mounting bracket



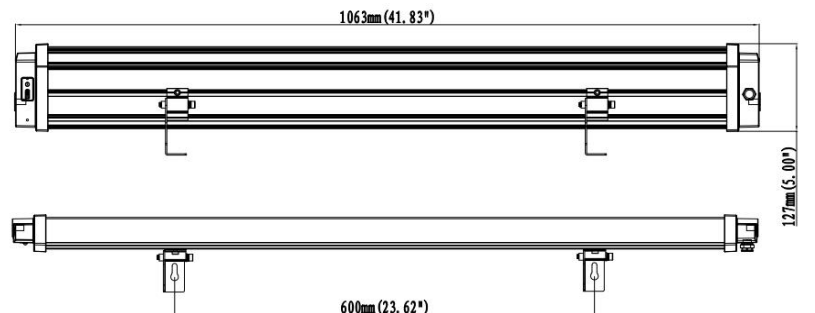
Movable mounting bracket

Dimensions

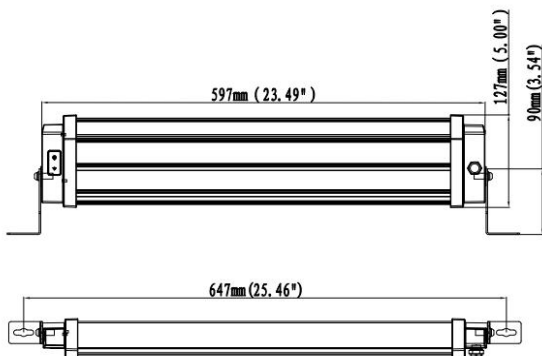
Unit:mm



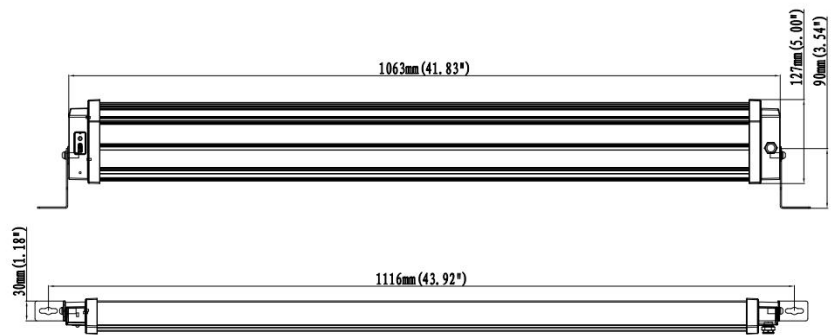
5W



10W



5W



10W

Accessories



Rotatable mounting bracket
SPCC materials
Code: BC-F65-01



Movable mounting bracket
AL6063+SPCC materials
Code: BC-F65-02



Remote control
Remote control
code: HY-002